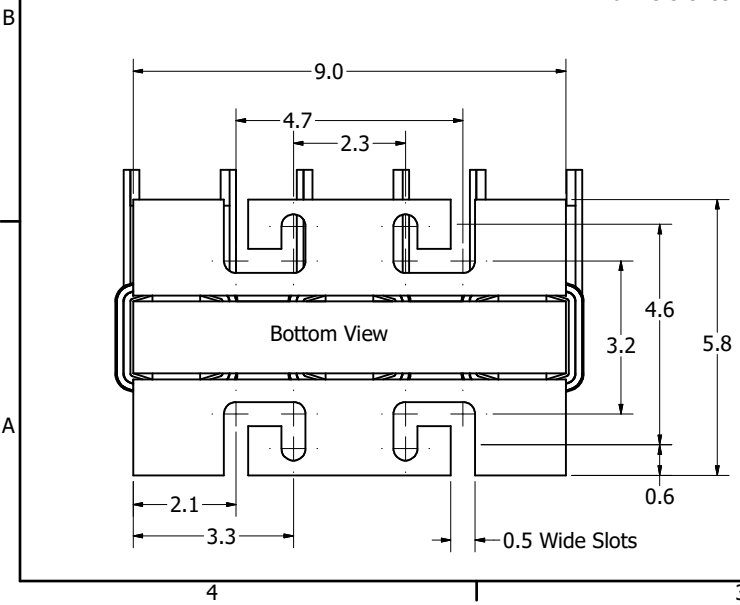
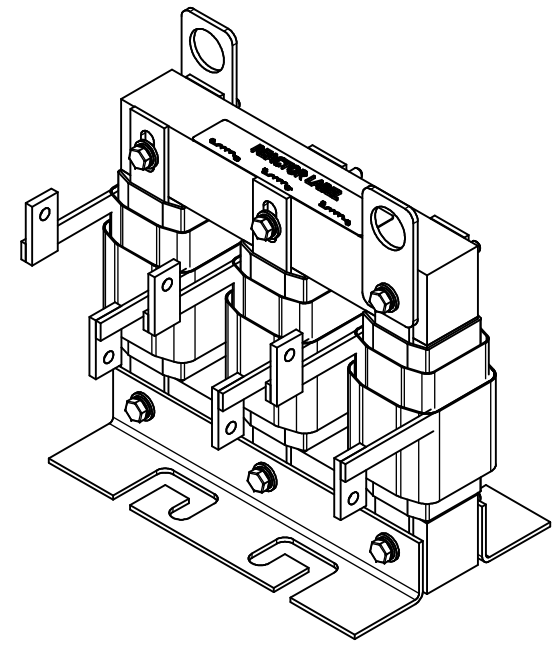
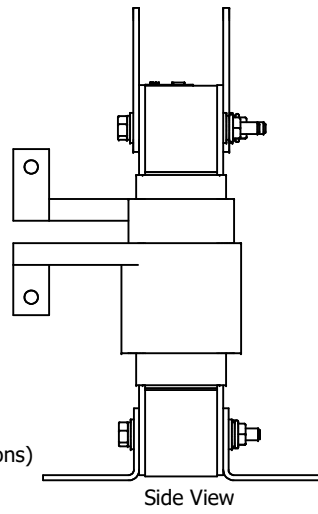
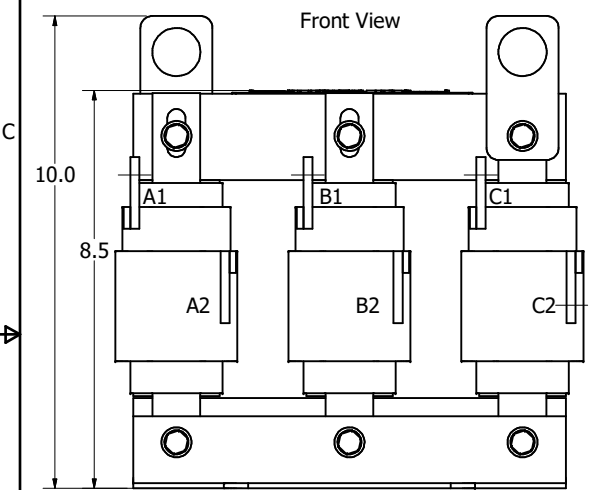
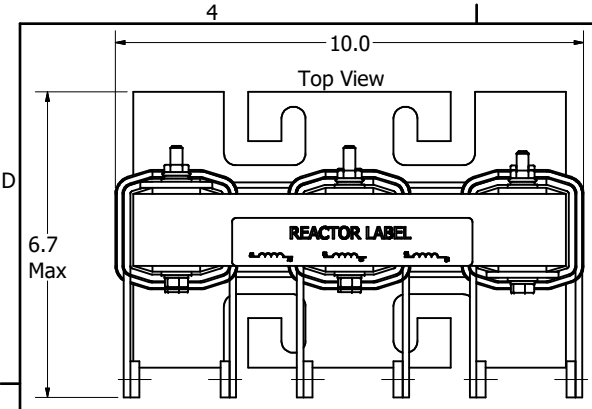


208/240 Rated Voltage, 600 Max Voltage, High Z, Impedance.

Part Number	Horsepower (HP)	Motor Amps (A)	Maximum Amps (A)	Inductance (uH)	Weight (LBS)	Losses (W)	Available Lug Kit	Terminal Hole Diameter (Inches)
KDRH24H	50	143	143	143	31	201	SLK21	0.28



(Customer Connections) Markings On Coils For Reference Only.

**TCI** (800) 824-8282 transcoil.com

TCI, LLC  
Germantown, WI, USA  
transcoil.com  
800-824-8282

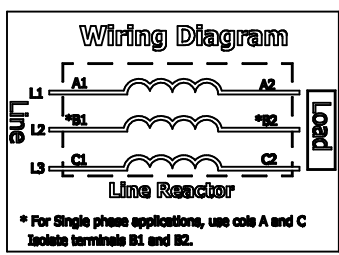
KDR.H Drive Reactor  
KDR - Motor Amps -  
SPL, 50/60Hz, -V Rated, 600V Max, -A Max  
40C Amps Max, 150C Rise, Not IS  
Manual #30895 LUG KIT #SLK-

UL LISTED  
cULus LISTED

DATE CODE A1 A2 B1 B2 C1 C2

Notes:

1. KDR Lug Kits sold separately. Contact TCI.
2. UL file number: cULus Listed File E116124.
3. KDR Drive Reactors Comply With The Thermal and Altitude Standards Set Forth by NEMA ST20-1992.
4. KDR IOM Manual Part Number 30895
5. Material(s) Shall be RoHS Compliant
6. Customer Is Responsible For Installation To Meet All National And Local Electrical Codes.



THE INFORMATION AND DESIGNS CONTAINED IN THIS DRAWING ARE CONFIDENTIAL AND THE PROPRIETARY PROPERTY OF ALLIED MOTION TECHNOLOGIES INC. AND ITS SUBSIDIARIES. NEITHER THIS DESIGN NOR ANY INFORMATION CONTAINED IN THIS DRAWING MAY BE REPRODUCED OR DISCLOSED TO OTHERS WITHOUT THE EXPRESS WRITTEN CONSENT OF ALLIED MOTION TECHNOLOGIES INC. AND ITS SUBSIDIARIES.

NO	REVISION	DATE	BY	TOLERANCES (EXCEPT AS NOTED)
B	6550, Add Lift Rings	1/30/2024	DSW	DECIMAL .XX ± .25 .XXX ± .10
A	6555, Copper bus to flag Terminals	1/10/2024	DSW	FRACTIONAL ± 1/32
NO	REVISION	DATE	BY	ANGULAR ± 1°

**TCI** W132N10611 (Rev 13 Feb 2024)  
Germantown, WI 53012  
© 2024 TCI, LLC

An Allied Motion Company  
KDR H Frame, (Flag Version)  
Reactor Drawing

DESIGN BY: DSW DATE: 1/10/2024 107589-8DG  
SCALE: 1/2 DRAWN BY: JCE SHEET 1 OF 1